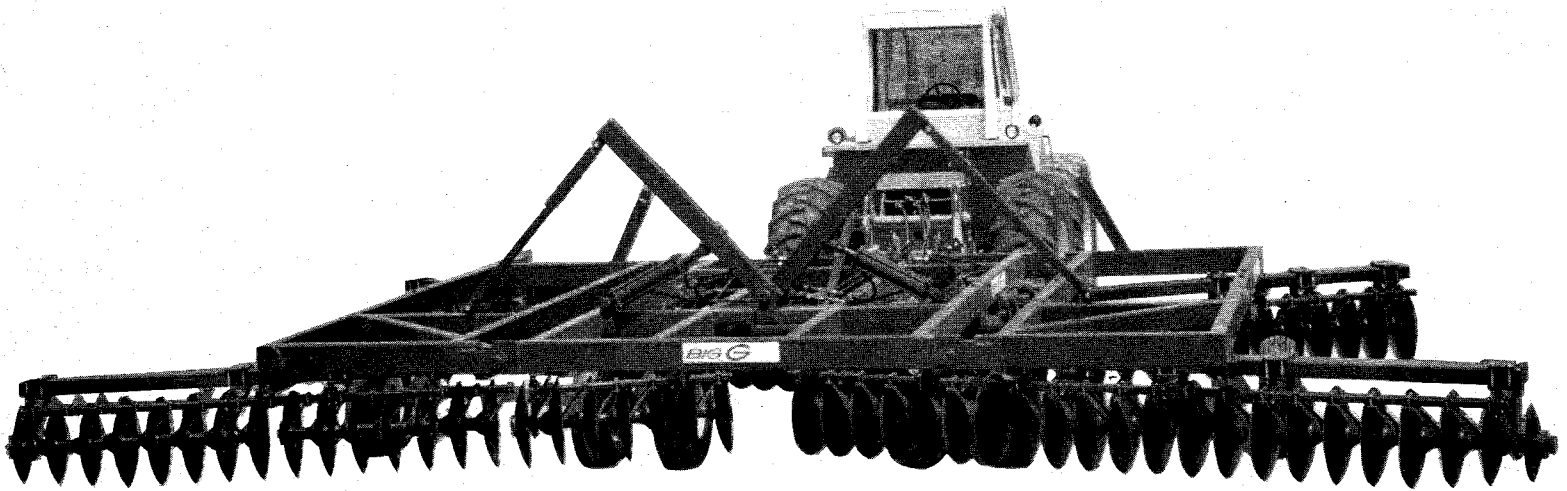


**BIG G**  **DOUBLE OFFSET DISCS**  
**EXTRA HEAVY DUTY 3000 SERIES**



**OPERATING INSTRUCTIONS  
 AND  
 PARTS CATALOG  
 NO. 3000**

**INDEX**

Operating Instructions .....	2
Adjusting Procedures .....	2
Leveling Rod .....	3
Draw Bar .....	3
Right Wing Frame .....	4
Main Frame .....	5
Left Wing Frame .....	6
Rocker Shafts .....	7
Axle .....	8
Hydraulic System .....	9
Gangs .....	10 & 11
Bearing Hangers .....	11



***green line, inc.***

AIRPORT INDUSTRIAL PARK  
 P. O. BOX 434  
 HARPER, KANSAS 67058  
 PHONE (316) 896-7372

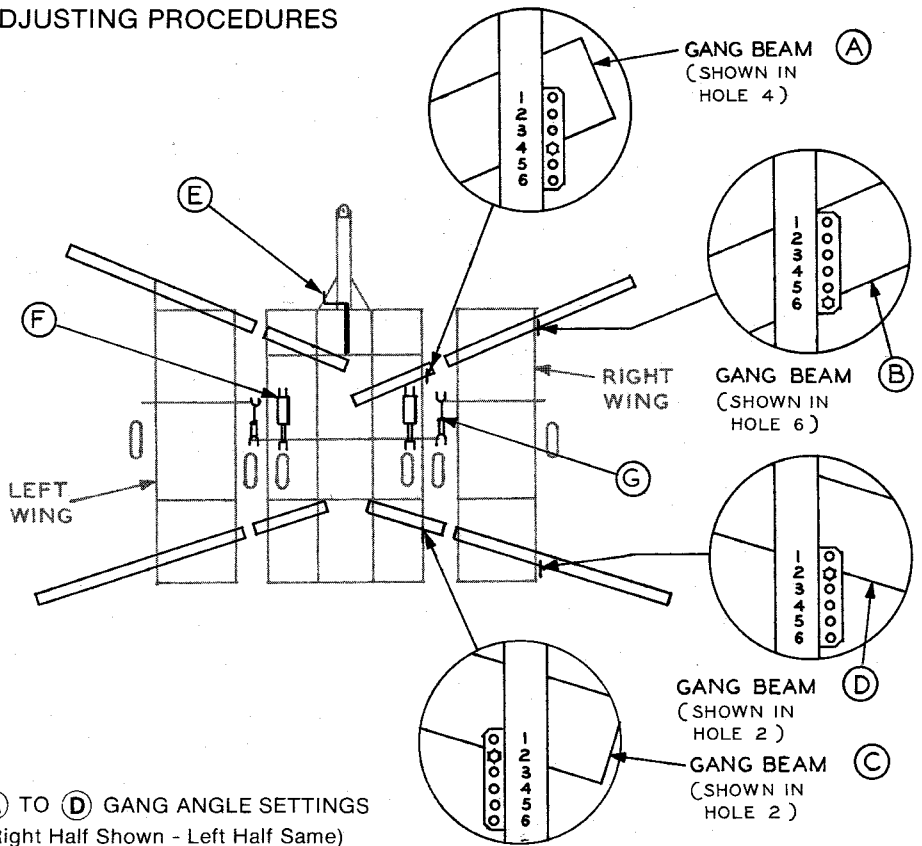
## OPERATING INSTRUCTIONS

- TRACTOR DRAW BAR**  
 Double offset discs perform best when tractor draw bar is pinned or "stiff-hitched." Disc is designed for tractor draw bar, height 12" to 18". Make necessary adjustments on tractor draw bar to arrive at this height.
- ROADING SPEED**  
 Never road the machine at excessive speeds. Maximum road speed is 20 MPH and slower on rough roads. The Big G is an extremely heavy unit and sudden impact at high road speeds will result in unusual pressure on the axle assembly and main frame of the unit. Wings should be pinned up and tie backs fastened at all times during roading.
- FIELD SPEED**  
 Operating speeds in the field is 3 to 6 MPH. In rocky conditions, the slower speed is recommended.
- ON FIELD CORNERS**  
 Always raise the disc on corners.
- TIRE PRESSURE**  
 Tire air pressure should be maintained at 48# P.S.I.
- LUBRICATION**  
 Gang bearings are regreaseable sealed type. One or two shots of grease after every 100 hours of operation is recommended. Grease the rocker shaft bearings, lift arm pins, wing hinges and hitch zerks daily.
- FOLDING WINGS**  
 Prior to raising or lowering the folding wings on unit, remove all air from the lift arm cylinders. Failing to do this could cause wings to drop and severely damage the machine. This is accomplished by removing the 1" pins from the spring loaded telescoping arms and run the cylinders through a complete cycle 8 to 10 times. Replace the pins, being sure the keeper pins are securely latched.
- CAUTION:** The above procedure must be followed prior to initial operation or anytime after that system is broken and air gets into the hydraulic system. Make certain the 1" pins are installed in the front safety arms, this prevents the wing from falling when the telescoping arms are disconnected. An orifice has been installed at the lower part of both wing lift cylinders to insure slow, steady operation and prevent damage to the wings should a hose break.
- LOOSE GANG UNITS**  
 Check the gang units regularly for tightness. If they become loose, tighten 2" nut with knocker wrench provided.
- SCRAPERS**  
 Scrapers are fully adjustable. In trash conditions, adjust scraper to 1" to 2" from the disc blade. Muddy soil, adjust scrapers within 1/8" of disc blade.  
 The disc will perform much better after the blades are used and shiny enough for the dirt to roll off smoothly.
- ADJUSTING THE UNIT**  
 See Adjusting Procedures ...

### DANGER

NEVER STAND UNDER PATH OF WINGS IN THE UP POSITION UNLESS WING LOCK PINS ARE INSTALLED. THE LOCK PINS ARE TO SECURE WINGS FOR STORAGE AND ROAD TRAVEL.

## ADJUSTING PROCEDURES



**(A) TO (D) GANG ANGLE SETTINGS**  
 (Right Half Shown - Left Half Same)

Field Condition For:	Recommended Hole For Gang Beam			
	A	B	C	D
Fine Finishing	4	6	2	2
Rocky Conditions	4	6	2	2
Average Soil Condition	4	4	3	6
Sticky Tough Soil	2	3	3	4
Breaking Sod	2	2	4	6
Dry & Hard Soil	2	2	4	6

### (E) LEVEL SCREW ADJUSTMENT

Leaves field	Adjustment
Center furrow does not fill to level	Turn counter clockwise to lower rear gangs as required
Center pulls in excess causing ridge	Turn clockwise to raise rear gangs as required

### (F) HYDRAULIC CYLINDERS DEPTH STOP - ADJUSTMENT

Set the cylinder stops to obtain the desired depth. It is important that stops on both cylinders be set the same to prevent damage to rocker shaft. They must be measured and set within 1/8" of each other.

### (G) ROCKER SHAFT TURNBUCKLE ADJUSTMENT

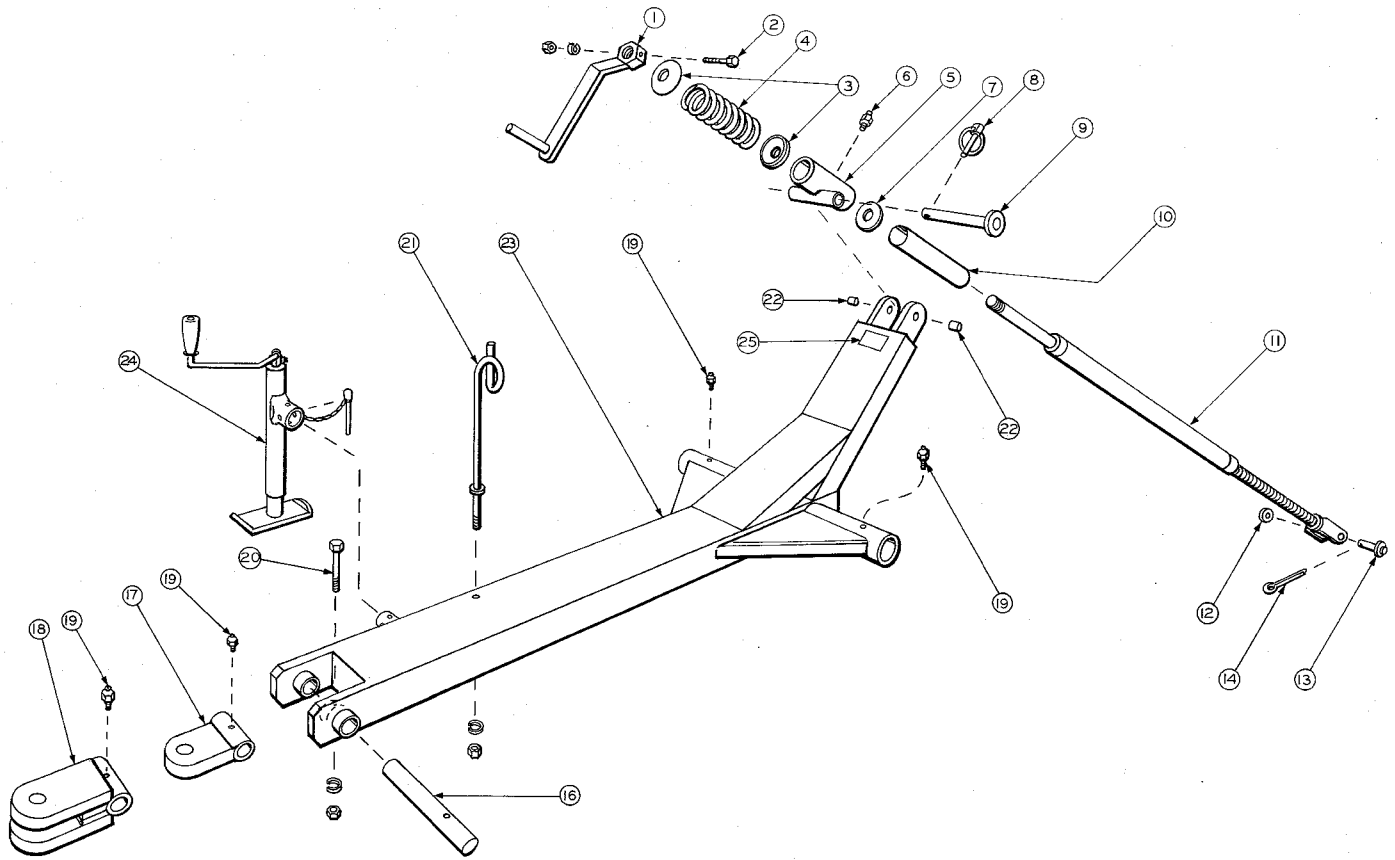
Initial Setting is 11 1/4" Center of Pin to Pin

Condition	Adjustment
Outer end of wing is higher, causing outer disc blades to cut shallower than blades under center section	Lengthen turnbuckle 2 or 3 complete turns & recheck field condition. When even penetration is obtained, wing frame will be level with main frame.
Outer end of wing frame is lower causing outer disc blades to cut deeper than blades under center section	Shorten turnbuckle 2 or 3 complete turns & recheck field condition. When even penetration is obtained, wing frame will be level with main frame



**green line, inc.**

AIRPORT INDUSTRIAL PARK  
 P.O. BOX 434  
 HARPER, KANSAS 67058  
 PHONE (316) 896-7372



## LEVELING ROD ASSEMBLY

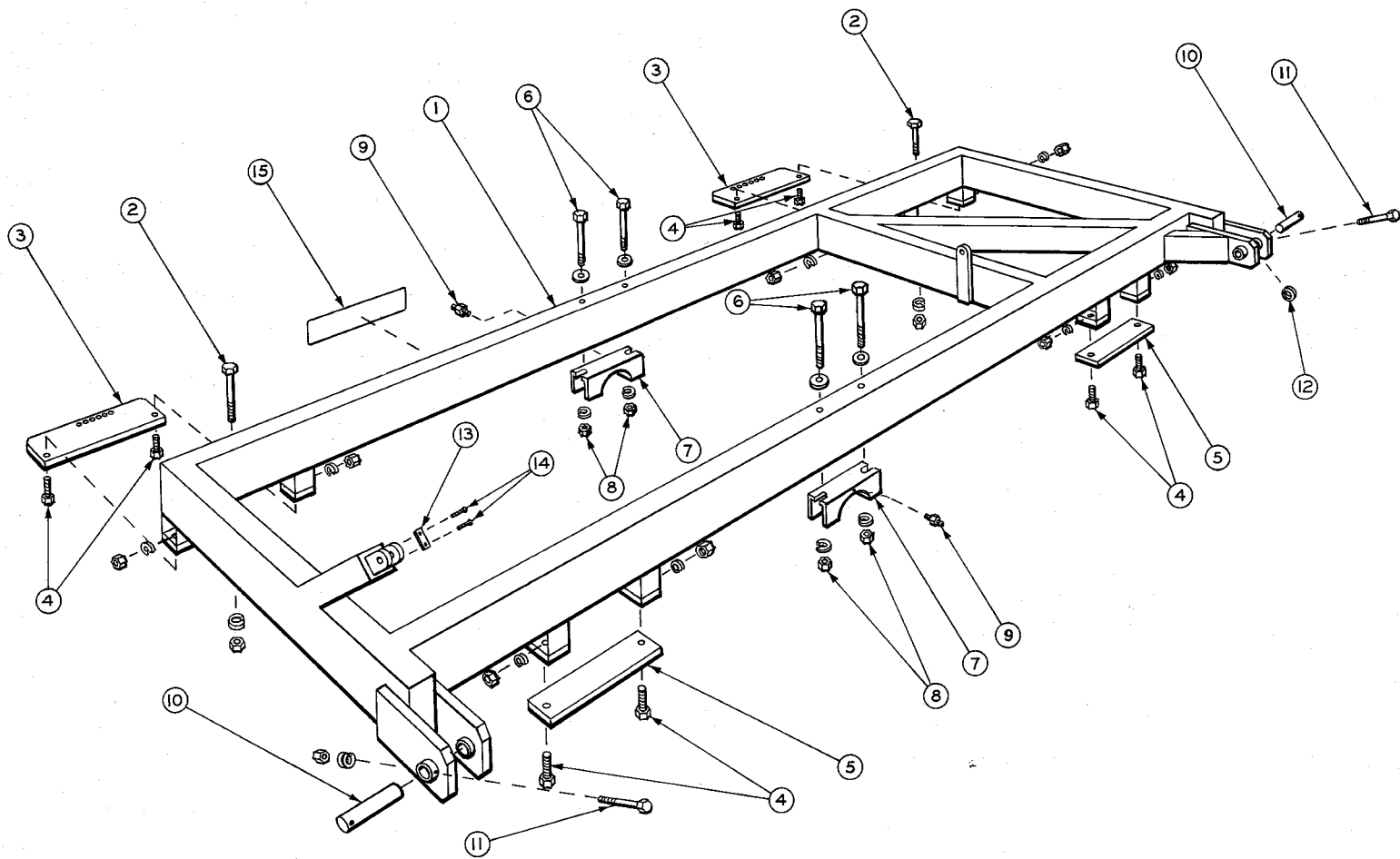
PART NO. 30015-009

Item	Part No.	No. Req'd.	Description
1	10015-002	1	Leveling Screw Handle
2	3/8 x 3 1/2 NCZP	1	Bolt, Nut & Lock Washer
3	10015-003	2	Spring Retainer
4	10015-005	1	Spring
5	10005-010	1	Pivot Tube
6	1/8 - 27 NPT ZP	1	Zerk
7	1 5/8 ZP	1	Flat Washer
8	P-794 - 1/4 ZP	1	Clip Pin
9	10005-011	1	Pivot Pin
10	10015-007	1	Dust Shield
11	10015-008	1	Linkage Tube Weldment
12	1" ZP	1	Flat Washer
13	1 x 2 5/8 ZP	1	Clevis Pin
14	1/4 x 2 ZP	1	Cotter Pin

## DRAW BAR ASSEMBLY

PART NO. 30006-009

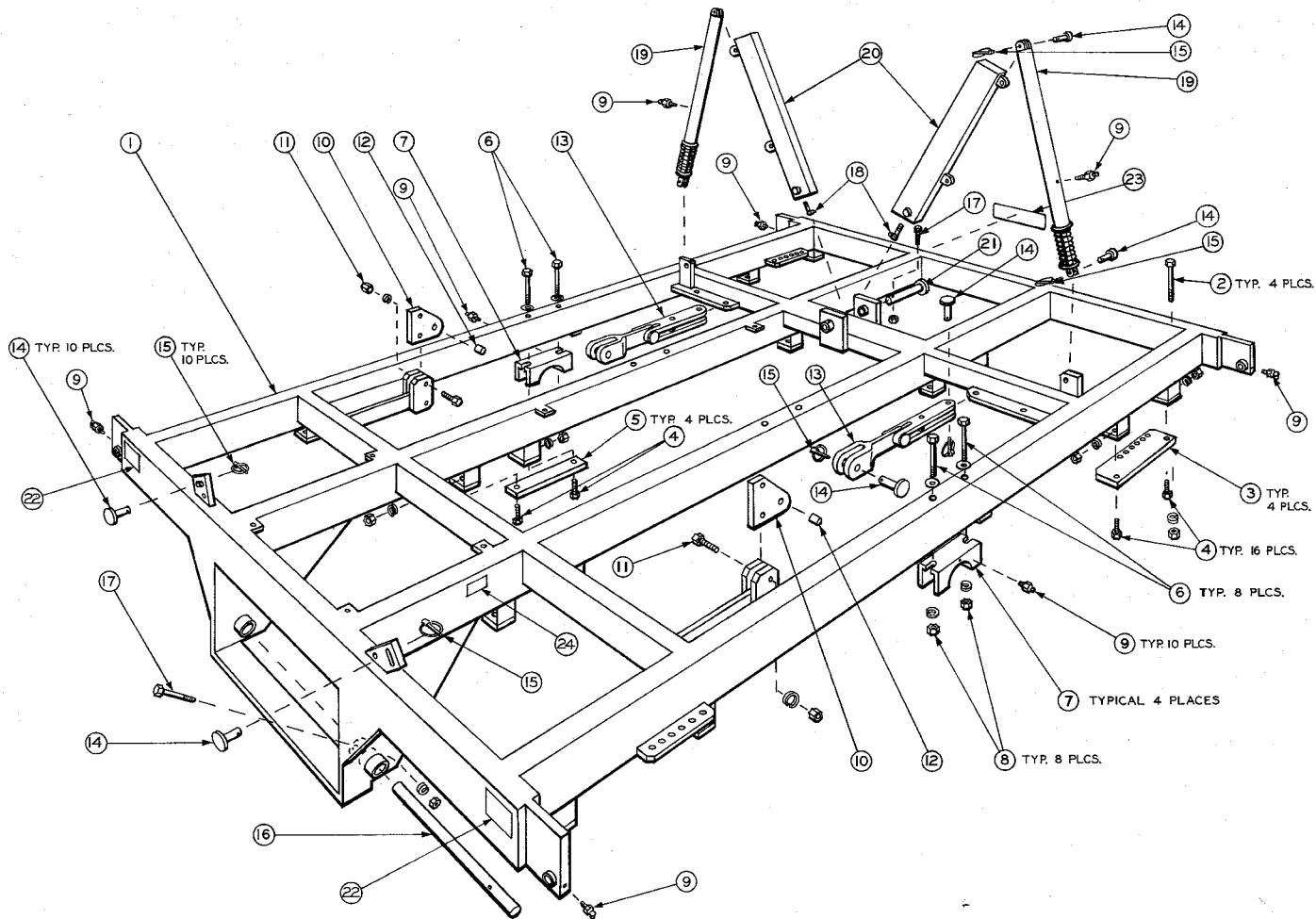
Item	Part No.	No. Req'd.	Description
16	30023-007	1	Hitch Pin
17	30006-019	1	Bar Hitch
18	30006-020	Optional	Clevis Hitch
19	1/8 - 27 NPT ZP	3	Zerk
20	3/8 x 3 1/2 NC ZP	1	Bolt, Nut & Lock Washer
21	10006-012	1	Hose Carrier, Nut & Lock Washer
22	10014-004	2	1" Bushing
23	30006-011	1	Tongue Weldment
24	5TM-15-0	1	Jack
25	10029-004	1	Direction Decal



## RIGHT WING FRAME ASSEMBLY

PART NO. 30001-010

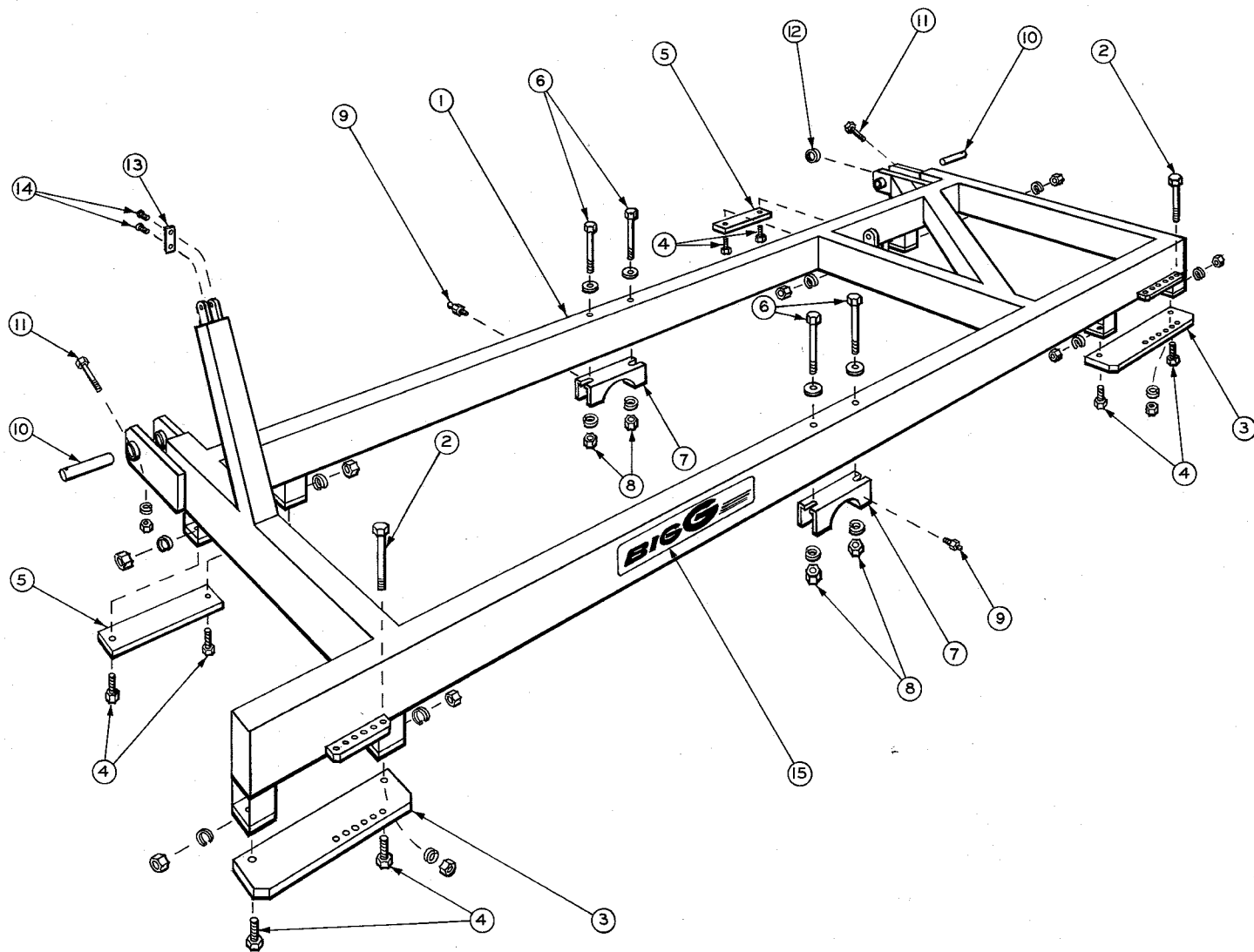
Item	Part No.	No. Req'd.	Description
1	30001-029	1	Right Wing Frame Weldment
2	3/4 x 6 1/2 NC ZP	2	Bolt, Nut & Lock Washer
3	30024-001	2	Adjustable Clamp Plate
4	3/4 x 2 1/2 NC ZP	8	Bolt, Nut & Lock Washer
5	30022-008	2	Gang Clamp Plate
6	3/4 x 10 NC ZP	4	Bolt & Flat Washer
7	1075-003	2	Rocker Shaft Bearing
8	3/4 NC ZP	4	Nut & Lock Washer
9	1/8 - 27 NPT ZP	2	Zerk
10	30039-002	2	Hinge Pin
11	3/8 x 3 1/2 NC ZP	2	Bolt, Nut & Lock Washer
12	30025-006	1	2" Bushing
13	30025-003	1	Shim
14	1/4 - 20 x 3/4 ZP	2	CSK Machine Screw
15	10029-003	1	Big G Decal



# MAIN FRAME ASSEMBLY

PART NO. 30001-009

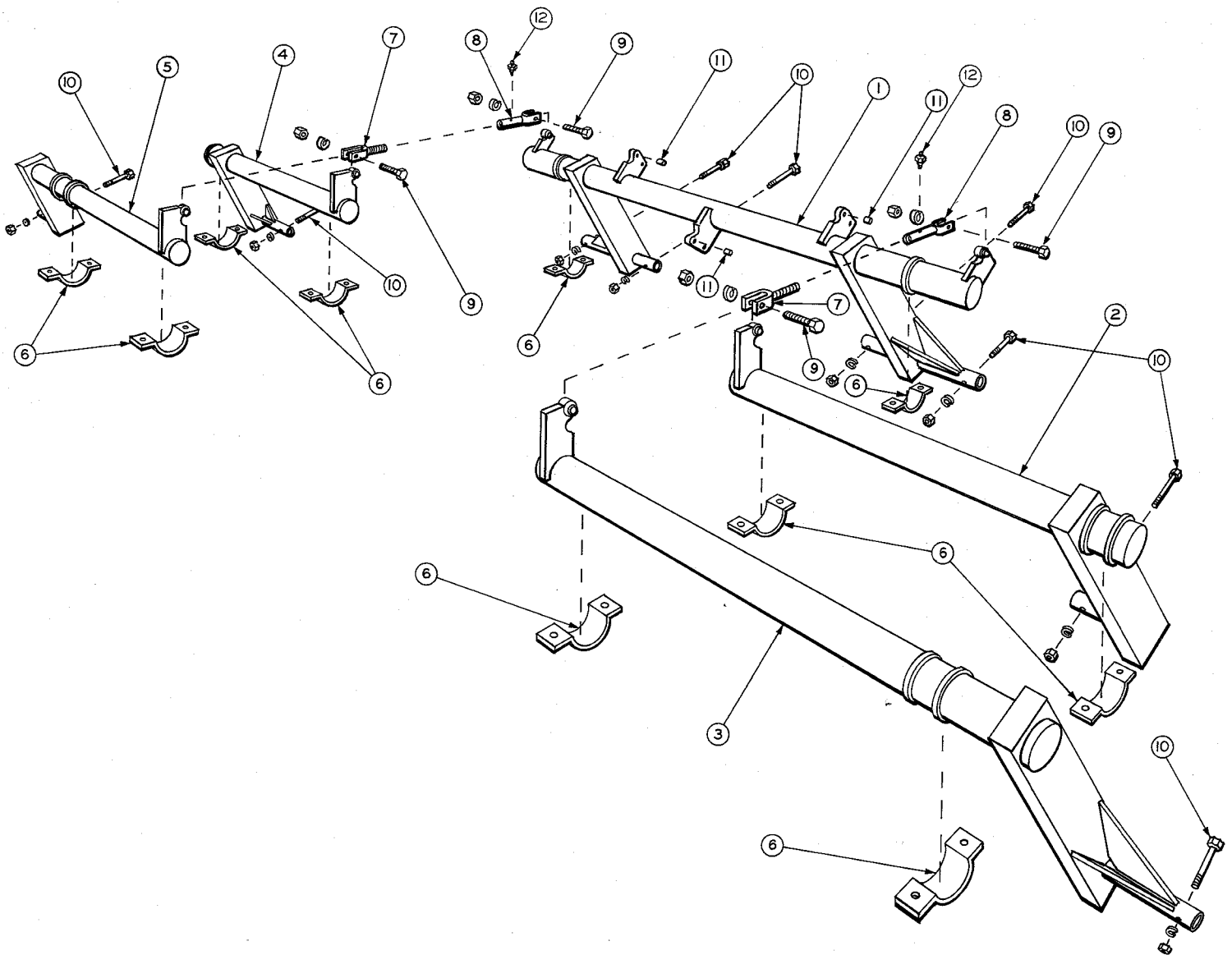
Item	Part No.	No. Reqd.	Description
1	30001-020	1	Main Frame Weldment
2	3/4 x 6 1/2 NC ZP	4	Bolt, Nut & Lock Washer
3	30024-001	4	Adjustable Clamp Plate
4	3/4 x 2 1/2 NC ZP	16	Bolt, Nut & Lock Washer
5	30022-008	4	Gang Clamp Plate
6	3/4 x 10 NC ZP	8	Bolt & Flat Washer
7	1075-003	4	Rocker Shaft Bearing
8	3/4 NC ZP	8	Nut & Lock Washer
9	1/8 - 27 NPT ZP	10	Zerk
10	10014-003	2	Cylinder Lug Plate
11	1/2 x 2 3/4 NC ZP	2	Bolt, Nut & Lock Washer
12	10014-004	2	1" Bushing
13	30004-009	2	Road Lock (Tie Back Assy.)
14	1 x 2 5/8 ZP	10	Clevis Pin
15	P-794 - 1/4 ZP	10	Clip Pin
16	30039-003	1	Draw Bar Pin
17	3/8 x 3 1/2 NC ZP	2	Bolt, Nut & Lock Washer
18	10025-007	2	90° Extended Zerk
19	30037-007	2	Telescoping Arm
20	30037-006	2	Lifting Arm
21	30039-004	1	Hinge Pin
22	10029-005	2	Caution Decal
23	10029-003	1	Big G Decal
24	10029-002	1	Serial Number Plate



## LEFT WING FRAME ASSEMBLY

PART NO. 30001-019

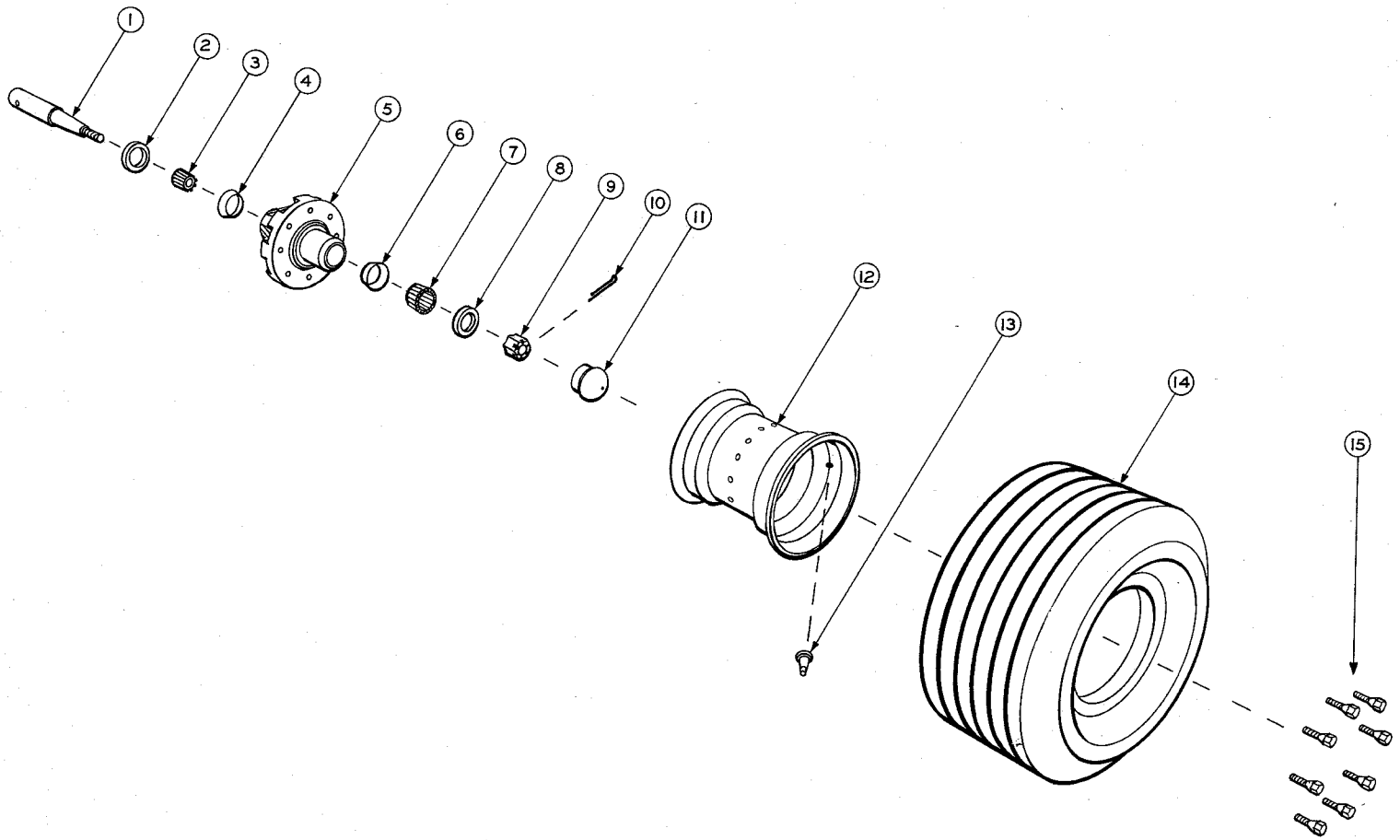
Item	Part No.	No. Req'd.	Description
1	30001-030	1	Left Wing Frame Weldment
2	3/4 x 6 1/2 NC ZP	2	Bolt, Nut & Lock Washer
3	30024-001	2	Adjustable Clamp Plate
4	3/4 x 2 1/2 NC ZP	8	Bolt, Nut & Lock Washer
5	30022-008	2	Gang Clamp Plate
6	3/4 x 10 NC ZP	4	Bolt & Flat Washer
7	1075-003	2	Rocker Shaft Bearing
8	3/4 NC ZP	4	Nut & Lock Washer
9	1/8 - 27 NPT ZP	2	Zerk
10	30039-002	2	Hinge Pin
11	3/8 x 3 1/2 NC ZP	2	Bolt, Nut & Lock Washer
12	30025-006	1	2" Bushing
13	30025-003	1	Shim
14	1/4 - 20 x 3/4 ZP	2	CSK Machine Screw
15	10029-003	1	Big G Decal



## ROCKER SHAFTS ASSEMBLY

Item	Part No.	No. Reqd.	Description
1	30010-010	1	Main Rocker Shaft
2	30010-019	1	Left Wing Shaft - 24' Model
3	30010-020		Left Wing Shaft - 28', 32' & 35' Model
NS*	30010-039	Optional	Left Wing Shaft - Duals 32' & 35' Model
4	30010-029	1	Right Wing Shaft - 24' Model
5	30010-030		Right Wing Shaft - 28', 32' & 35' Model
NS*	30010-040	Optional	Right Wing Shaft - Duals 32' & 35' Model
6	1075-004	8	Rocker Arm Strap
7	30035-010	2	Linkage Rod - Male
8	30035-019	2	Linkage Rod - Female
9	1 x 4 1/2 NC ZP	4	Bolt, Nut & Lock Washer
10	1/2 x 3 1/2 NC ZP	6	Bolt, Nut & Lock Washer
11	10014-004	3	1" Bushing
12	1/4 - 28 STR. ZP	2	Zerk

\*NS = Not Shown

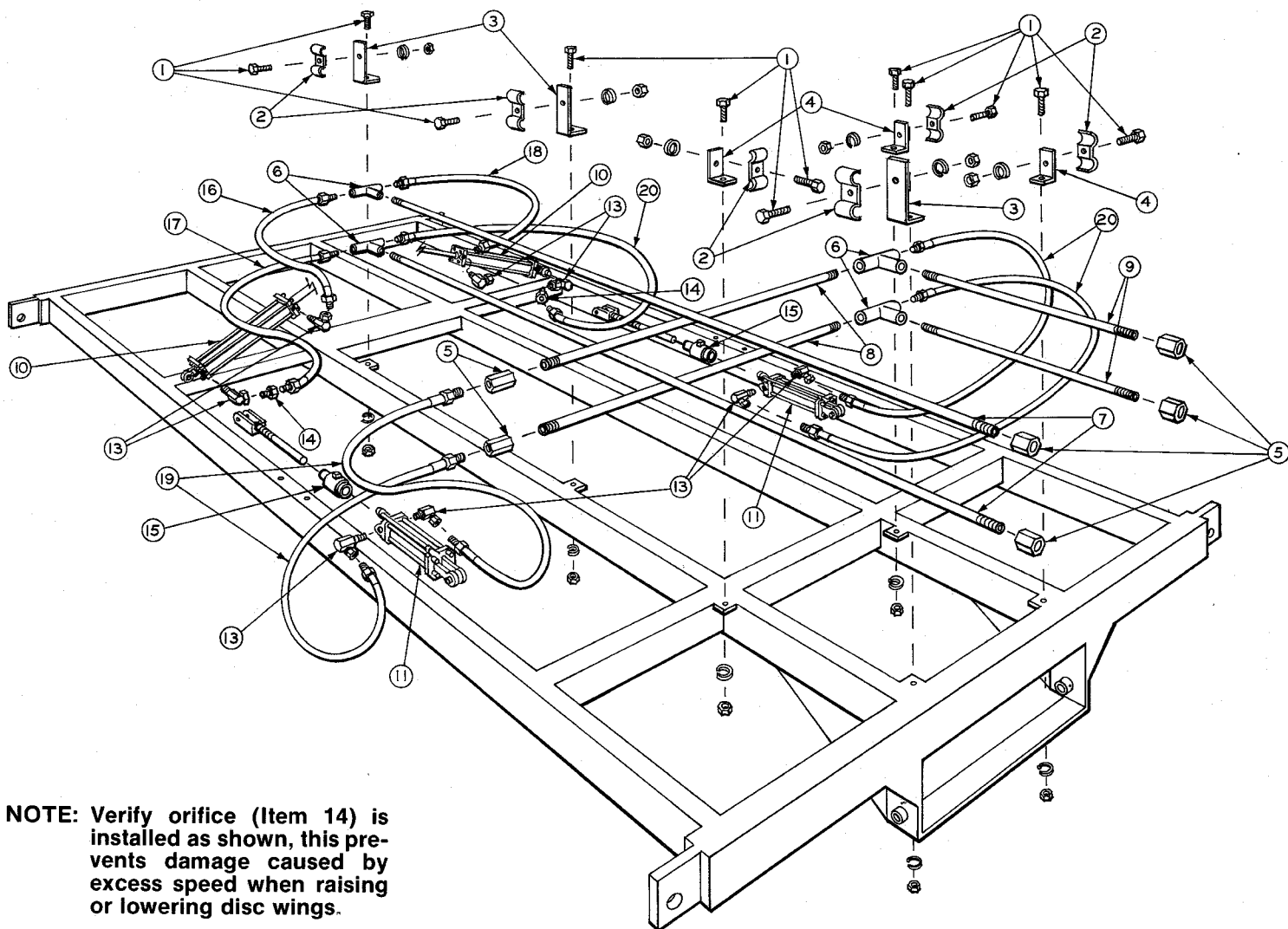


## AXLE ASSEMBLY

Complete Axle Ass'y Hub & Spindle Ass'y  
 Part No. 30018-009 Part No. 30018-019

Item	Part No.	No. Required	No. Required	Description
1	106272-B	1	1	Spindle
2	106167	1	1	Seal
3	106275	1	1	Inner Cone Bearing
4	105254	1	1	Inner Cup
5	106799	1	1	Hub
6	104081	1	1	Outer Cup
7	104082	1	1	Outer Cone Bearing
8	104581	1	1	13/16 Flat Washer
9	103289	1	1	3/4 - 16 Castelated Nut
10	5957	1	1	Cotter Pin
11	103969	1	1	Cap
12	106939	1	—	W10L-16 Wheel
13	TR-415	1	—	Valve Stem & Cap
14	12.5L-16 SL	1	—	12 Ply Rating Tubeless Tire
15	105144	8	—	9/16-18 SAE Lug Bolt





**NOTE:** Verify orifice (Item 14) is installed as shown, this prevents damage caused by excess speed when raising or lowering disc wings.

## HYDRAULIC ASSEMBLY

Item	Part No.	No. Reqd.	Description
1	3/8 x 1 1/4 NC ZP	12	Bolt, Nut & Lock Washer
2	10025-002	6	Pipe Clamp
3	30025-004	3	Pipe Bracket - Long
4	30025-005	3	Pipe Bracket - Short
5	2H128F-8F	6	1/2 Female NPTF to 1/2 Female NPTF Union
6	1/2 Female NPTF	4	Black Straight Tee
7	30008-001	2	Black Pipe 1/2 Male NPT Both Ends 116" Long
8	30008-002	2	Black Pipe 1/2 Male NPT Both Ends 40" Long
9	30008-003	2	Black Pipe 1/2 Male NPT Both Ends 27" Long
10	PMC-9516-Sp.	2	5 x 16 Hydraulic Cylinder
NS*	PMC-10016-3-B	Optional	6 x 16 Hydraulic Cylinder
11	PMC-8608	2	4 x 8 Hydraulic Cylinder
NS*	508 NC	Optional	5 x 8 Hydraulic Cylinder
12	Clevis Pins & Clips	8	Included With Hydraulic Cylinders
13	2H0308-08	8	1/2 Male NPTF to 1/2 Female NPSM 90° Elbow
14	2H108-08	2	1/2 Male NPTF to 1/2 Female NPSM Restrictor w/.055 Orifice
15	PM-SC-3	2	Stroke Control
16	30008-004	1	Hydraulic Hose 3/8 SAE w/1/2 Male NPT Couplings 18" lg.
17	30008-005	1	Hydraulic Hose 3/8 SAE w/1/2 Male NPT Couplings 27" lg.
18	30008-006	1	Hydraulic Hose 3/8 SAE w/1/2 Male NPT Couplings 48" lg.
19	30008-007	2	Hydraulic Hose 3/8 SAE w/1/2 Male NPT Couplings 54" lg.
20	30008-008	3	Hydraulic Hose 3/8 SAE w/1/2 Male NPT Couplings 60" lg.

# FRONT GANG

35' MODEL

32' MODEL

28' MODEL

24' MODEL

24' MODEL

28' MODEL

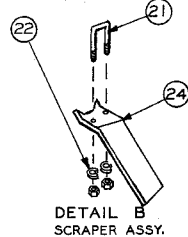
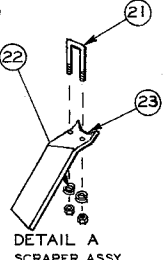
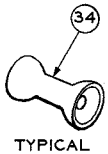
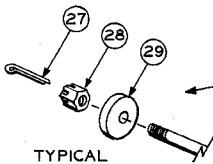
32' MODEL

35' MODEL

# REAR GANG

SEE DETAIL B

SEE DETAIL A



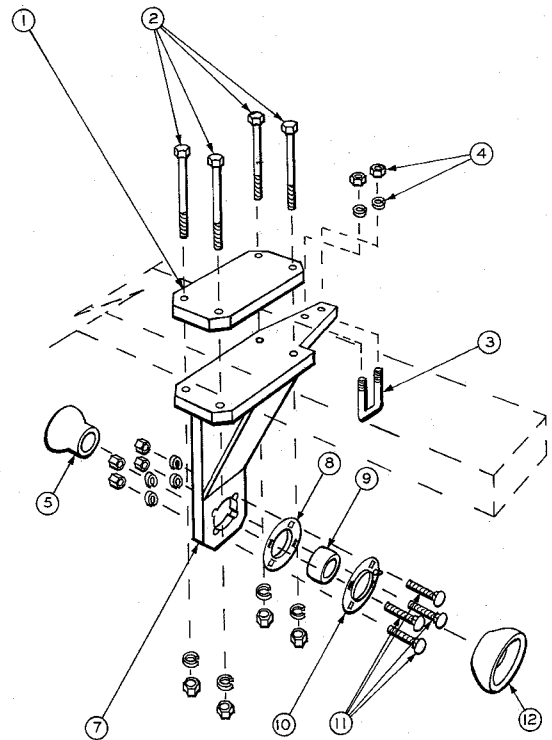
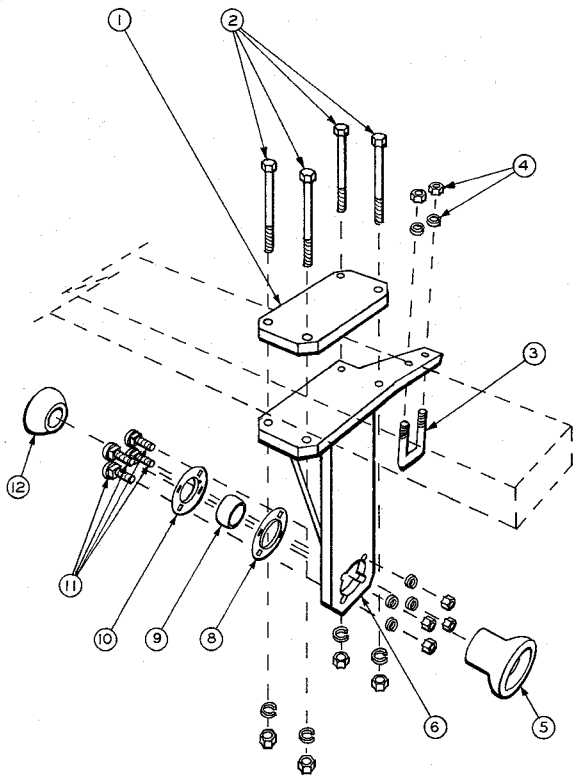
SEE DETAIL A

SEE DETAIL B

# GANG ASSEMBLIES

Item	Part No.	Description	Model No. & No. Required			
			3024 499 24' Unit	3028 499 28' Unit	3032 499 32' Unit	3035 499 35' Unit
1	30016-001	Beam 53"	2	2	2	2
2	30016-002	Beam 55 1/2"	2	2	2	2
3	30016-003	Beam 75"	2	—	—	—
4	30016-004	Beam 88"	2	—	—	—
5	30016-005	Beam 100"	—	2	—	—
6	30016-006	Beam 115"	—	2	—	—
7	30016-007	Beam 118"	—	—	2	—
8	30016-008	Beam 133"	—	—	2	—
9	30016-011	Beam 136"	—	—	—	2
10	30016-012	Beam 151"	—	—	—	2
11	30017-001	Scraper Beam 54"	2	2	2	2
12	30017-002	Scraper Beam 60"	2	2	2	2
13	30017-003	Scraper Beam 72"	2	—	—	—
14	30017-004	Scraper Beam 87"	2	—	—	—
15	30017-005	Scraper Beam 100"	—	2	—	—
16	30017-006	Scraper Beam 115"	—	2	—	—
17	30017-007	Scraper Beam 118"	—	—	2	—
18	30017-008	Scraper Beam 133"	—	—	2	—
19	30017-011	Scraper Beam 136"	—	—	—	2
20	30017-012	Scraper Beam 151"	—	—	—	2
21	1/2 x 3 NC ZP	U Bolt	62	74	82	90
22	1/2 NC ZP	Nut & Lock Washer	124	148	164	180

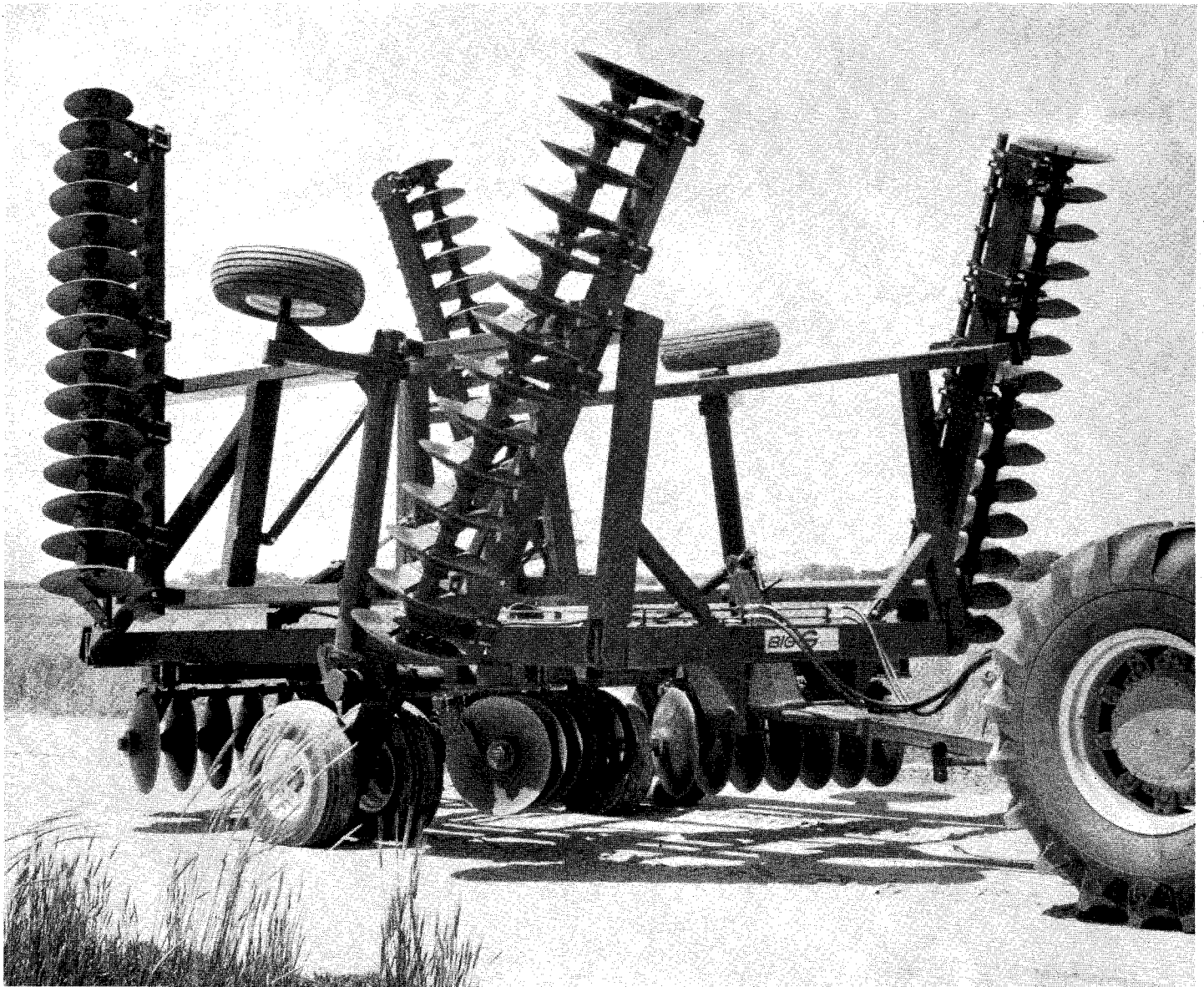
Item	Part No.	Description	Model No. & No. Required			
			3024 499 24' Unit	3028 499 28' Unit	3032 499 32' Unit	3035 499 35' Unit
23	10019-003	Scraper L.H.	31	37	41	45
24	10019-004	Scraper R.H.	31	37	41	45
25	10007-039	Bearing Hanger Assy. Left Hand	8	11	12	12
26	10007-040	Bearing Hanger Assy. Right Hand	8	11	12	12
27	3/8 x 3 1/2 ZP	Cotter Pin	8	10	12	12
28	10019-007	Lock Nut	8	10	12	12
29	850-001	End Washer	8	10	12	12
30	20-2843	Blade 24"	60	72	80	88
31	20-2873	Blade 22"	2	2	2	2
32	21-2965	Blade 20"	2	2	2	2
33	21-2964	Blade 18"	2	2	2	2
34	1080-001	Spool 9"	42	46	50	58
35	30028-001	Shaft 50 3/4"	—	2	2	—
36	30028-002	Shaft 59 7/8"	4	6	4	4
37	30028-003	Shaft 69"	—	—	2	4
38	30028-004	Shaft 78 1/8"	2	—	—	—
39	30028-005	Shaft 87 3/8"	2	—	—	—
40	30028-006	Shaft 105 5/8"	—	2	—	—
41	30028-007	Shaft 133 1/8"	—	—	2	—
42	30028-008	Shaft 151 1/2"	—	—	—	2
43	3/4 x 5 3/4 NC	U-Bolt, Nuts & Lock Washers	2	2	2	2



# BEARING HANGER ASSEMBLIES

Item	Part No.	Description	Bearing Hanger Assy. — Left Hand Part No. 10007-039 No. Required
1	10007-001	Hanger Plate	1
2	3/4 x 6 1/2 NC ZP	Bolt, Nut & Lock Washer	4
3	3/4 x 3 5/8 x 2 1/16 NCZP	U-Bolt	1
4	3/4 NC ZP	Nut & Lock Washer	2
5	1080-003	Half Spool (Convex)	1
6	10007-029	Bearing Hanger Weldment LH	1
8	10007-002	Inner Flangette	1
9	10007-003	Bearing	1
10	10007-004	Outer Flangette with Zerk	1
11	1/2 x 1 3/4 NC ZP	Carriage Bolt, Nut & Lock Washer	4
12	1080-002	Half Spool (Concave)	1

Item	Part No.	Description	Bearing Hanger Assy. — Right Hand Part No. 10007-040 No. Required
1	10007-001	Hanger Plate	1
2	3/4 x 6 1/2 NC ZP	Bolt, Nut & Lock Washer	4
3	3/4 x 3 5/8 x 2 1/16 NCZP	U-Bolt	1
4	3/4 NC ZP	Nut & Lock Washer	2
5	1080-003	Half Spool (Convex)	1
7	10007-030	Bearing Hanger Weldment RH	1
8	10007-002	Inner Flangette	1
9	10007-003	Bearing	1
10	10007-004	Outer Flangette with Zerk	1
11	1/2 x 1 3/4 NC ZP	Carriage Bolt, Nut & Lock Washer	4
12	1080-002	Half Spool (Concave)	1



## WARRANTY

Green Line, Inc. warrants each product (except tires) manufactured by it shall be free from defects in material and workmanship. This warranty shall be limited to making good, F.O.B. Factory, any part which under normal and proper use and maintenance proves defective in material and workmanship within one year (12 months) after date of delivery to original Buyer, provided that notice of such defect and satisfactory proof is promptly given by the Buyer to the Seller and such part is returned with transportation charges prepaid and Factory examination proves such part to have been defective. It is understood that Buyer shall bear the expense of installation and will pay for travel time if he chooses to have product repaired at another location. This warranty does not apply to any product that has been subject to overloading, misuse, negligence or accident, nor to any part that shall have been repaired, altered, or using parts not sold or approved by Green Line, Inc. This warranty is the only warranty applicable and is expressly in lieu of any warranties otherwise implied, and in no event shall the Seller or the Manufacturer be liable for consequential or special damages and neither assumes nor authorizes anyone to assume for any of them any additional liability in connection therewith.



***green line, inc.***

AIRPORT INDUSTRIAL PARK  
P. O. BOX 434  
HARPER, KANSAS 67058  
PHONE (316) 896-7372

In the interest of technical development, we reserve the right to make changes without notice at anytime in design, equipment, specifications, materials and prices, without obligation to incorporate such improvements in any products which have been shipped or are in service.