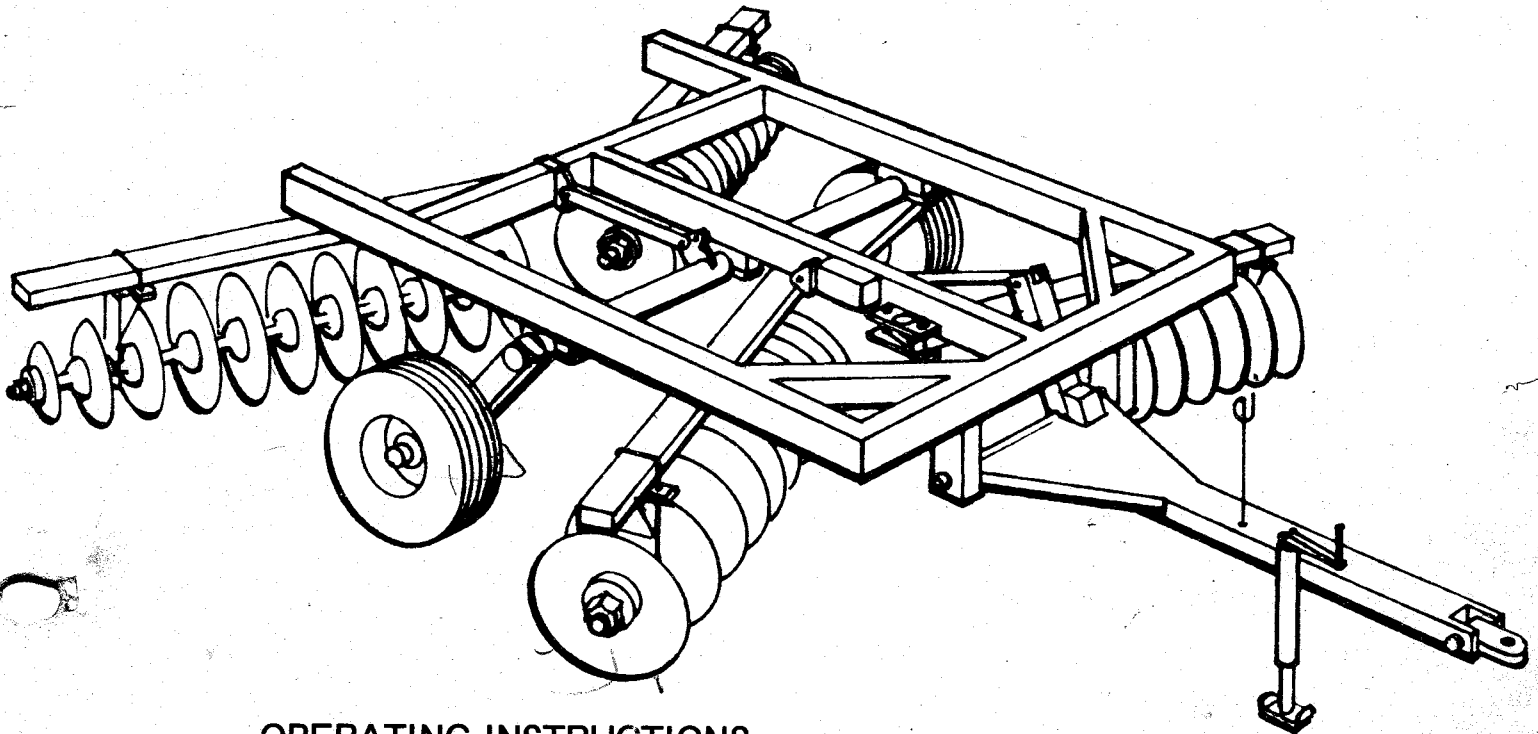




# DOUBLE OFFSET DISCS

HEAVY DUTY 1200 SERIES + 3100 Series



## OPERATING INSTRUCTIONS AND PARTS CATALOG NO. 1200

### INDEX

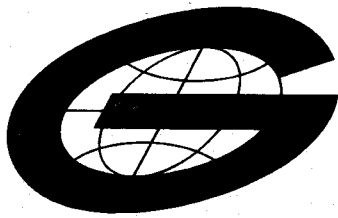
Operating Instructions .....	3
Adjusting Procedures .....	4
Leveling Rod .....	
Draw Bar .....	5
Main Frame .....	6
Rocker Shafts .....	7
Axle .....	8
Hydraulic System .....	9
Gangs .....	10 & 11
Bearing Hangers .....	11



***green line, inc.***

AIRPORT INDUSTRIAL PARK  
P. O. BOX 434  
HARPER, KANSAS 67058  
PHONE (316) 896-7372

BIG



# 1200 SERIES DOUBLE OFFSET DISCS

- **TRACTOR DRAW BAR**  
Double offset discs perform best when tractor draw bar is pinned or "stiff-hitched". Disc is designed for tractor draw bar, height 12" to 18". Make necessary adjustments on tractor draw bar to arrive at this height.
- **LOADING SPEED**  
Never road the machine at excessive speeds.  
Maximum road speed is 20 MPH and slower on rough roads. The Big G is a heavy unit and sudden impact at high road speeds will result in unusual pressure on the axle assembly and main frame of the unit. Gang beams should be pinned up and tie backs fastened at all times during roading.
- **FIELD SPEED**  
Operating speeds in the field is 3 to 6 MPH. In rocky conditions, the slower speed is recommended.
- **ON FIELD CORNERS**  
Always raise the disc on corners.
- **TIRE PRESSURE**  
Tire air pressure should be maintained at 24# P.S.I.
- **LUBRICATION**  
Gang bearings are regreasable sealed type. One or two shots of grease after every 100 hours of operation is recommended. Grease the rocker shaft bearings, lift arm pins, wing hinges and hitch zerks daily.
- **HYDRAULIC CYLINDERS**  
Disc is designed for a 4 x 8 Hydraulic Cylinder (not included as standard equipment) for depth control.
- **LOOSE GANG UNITS**  
Check the gang units regularly for tightness. If they become loose, tighten 2" nut with knocker wrench provided.
- **SCRAPERS**  
Scrapers are fully adjustable. In trash conditions, adjust scraper to 1" to 2" from the disc blade. Muddy soil, adjust scrapers within 1/8" of disc blade.  
The disc will perform much better after the blades are used and shiny enough for the dirt to roll off smoothly.
- **FOLDING GANG BEAMS (optional equipment)**  
Prior to raising or lowering the folding beams on unit, remove all air from the lift arm cylinders. Failing to do this could cause beam to drop and severely damage the machine. This is accomplished by removing the 1" pins from the beams and run the cylinders through a complete cycle 8 to 10 times. Replace the pins, being sure the keeper pins are securely latched.  
**CAUTION:** The above procedure must be followed prior to initial operation or any time after that system is broken and air gets into the hydraulic system.
- **ADJUSTING THE UNIT**  
See Adjusting Procedures ...

**DANGER**

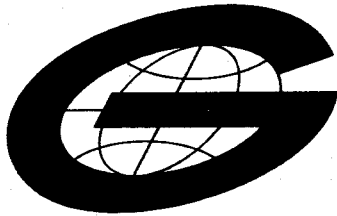
Never stand under path of gang beams in the up position unless lock pins are installed. The lock pins are to secure beams for storage and road travel.



***green line, inc.***

AIRPORT INDUSTRIAL PARK  
P. O. BOX 434  
HARPER, KANSAS 67058

BIG



1200 SERIES  
DOUBLE OFFSET DISCS

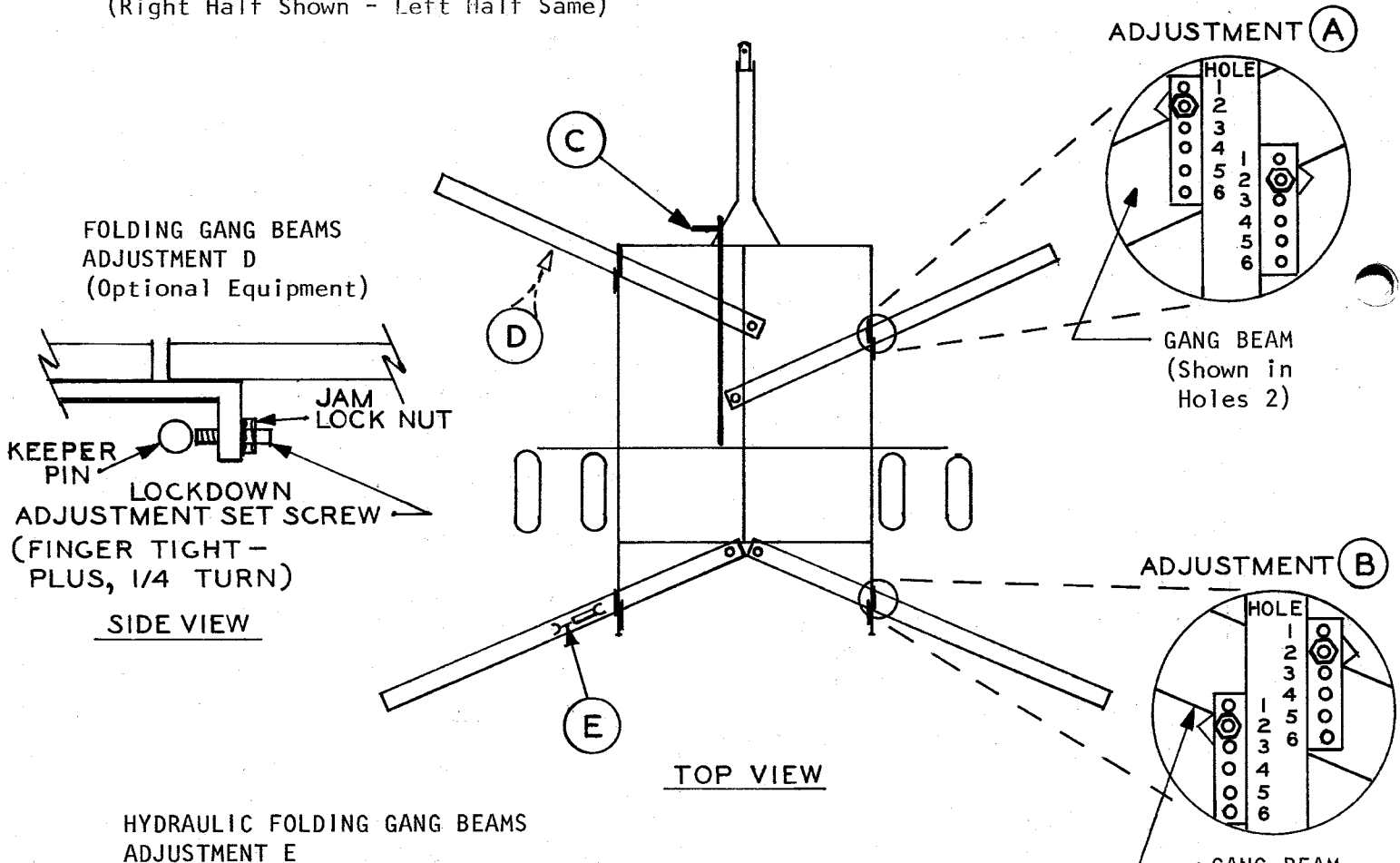
GANG ANGLE SETTINGS A AND B

Field Condition For:	Recommended Holes For Gang Adjustment	
	A	B
Finishing		
Average Setting	2	2
Tough Penetration		

LEVEL SCREW ADJUSTMENT C

Leaves Field	Adjustment
Center Furrow Does Not Fill In Level	Turn Counter Clockwise To Lower Rear Gangs As Required
Center Pulls In Excess Causing Ridge	Turn Clockwise To Raise Rear Gangs As Required

(Right Half Shown - Left Half Same)



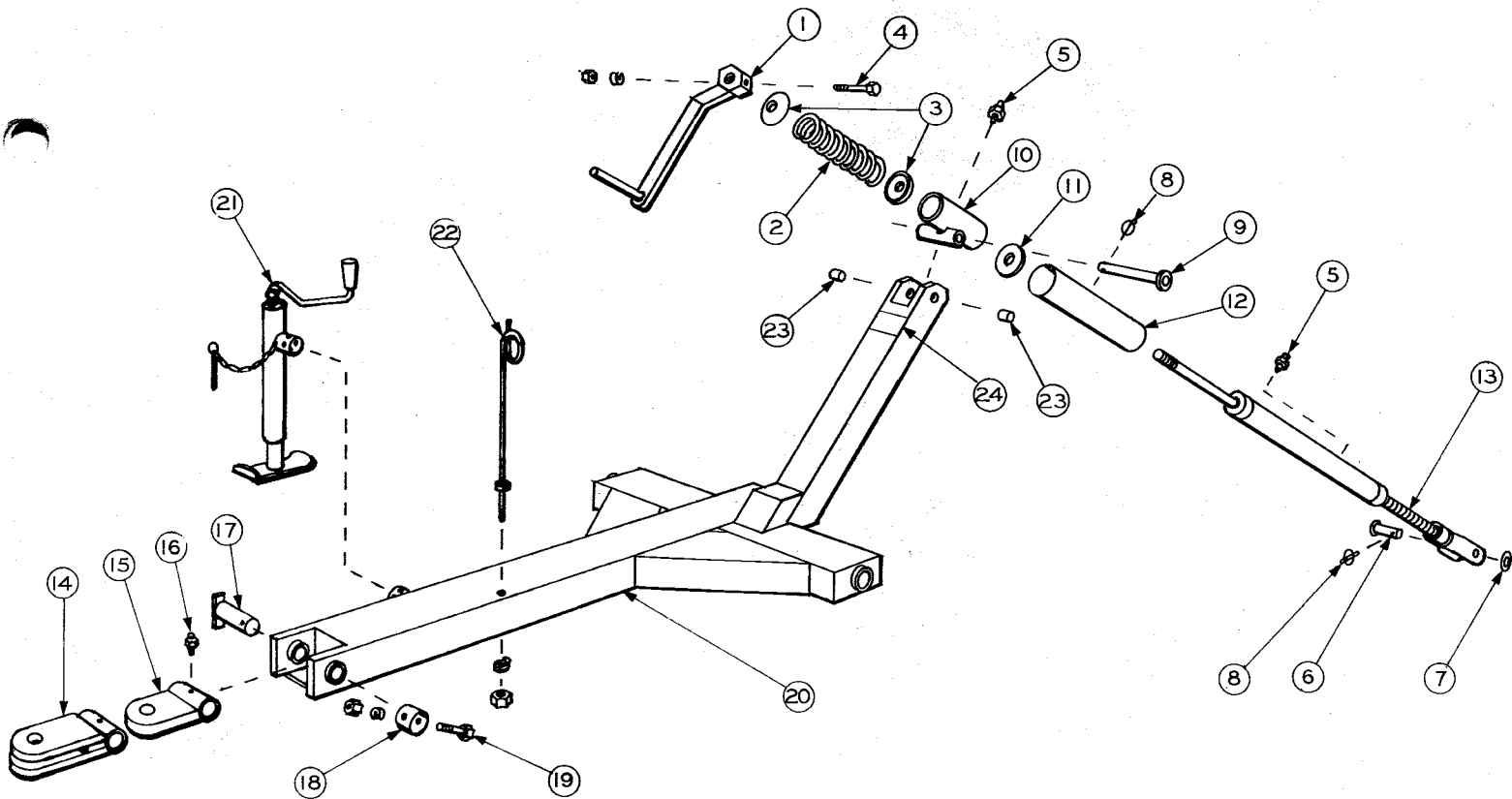
HYDRAULIC FOLDING GANG BEAMS ADJUSTMENT E

Adjust turnbuckle to permit installation of safety road pin with the beam in the raised position.



**green line, inc.**

AIRPORT INDUSTRIAL PARK  
P. O. BOX 434  
HARPER, KANSAS 67058  
PHONE (316) 896-7372



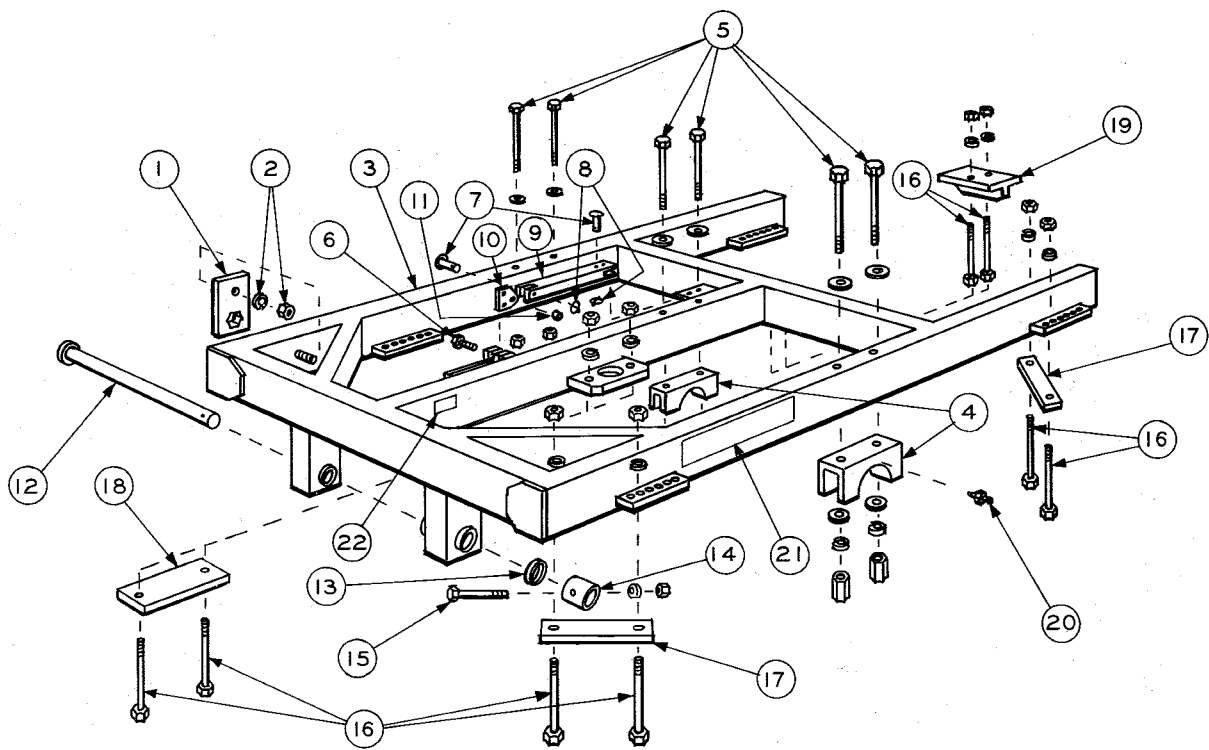
## LEVELING ROD ASSEMBLY

PART NO. 12015-009

ITEM	PART NO.	NO. REQD.	DESCRIPTION
1	10015-002	1	LEVELING SCREW HANDLE
2	10015-005	1	SPRING
3	10015-003	2	SPRING RETAINER
4	3/8 X 3 1/2 NC ZP	1	BOLT, NUT & LOCK WASHER
5	1/4 -28 STR. ZP	2	ZERK
6	1 X 2 5/8 ZP	1	CLEVIS PIN
7	1 ZP	1	FLAT WASHER
8	P-794 1/4 ZP	2	CLIP PIN
9	10005-011	1	PIVOT PIN
10	10005-010	1	PIVOT TUBE
11	1 5/8 ZP	1	FLAT WASHER
12	31015-001	1	DUST SHIELD
13	12015-008	1	LINKAGE TUBE WELDMENT

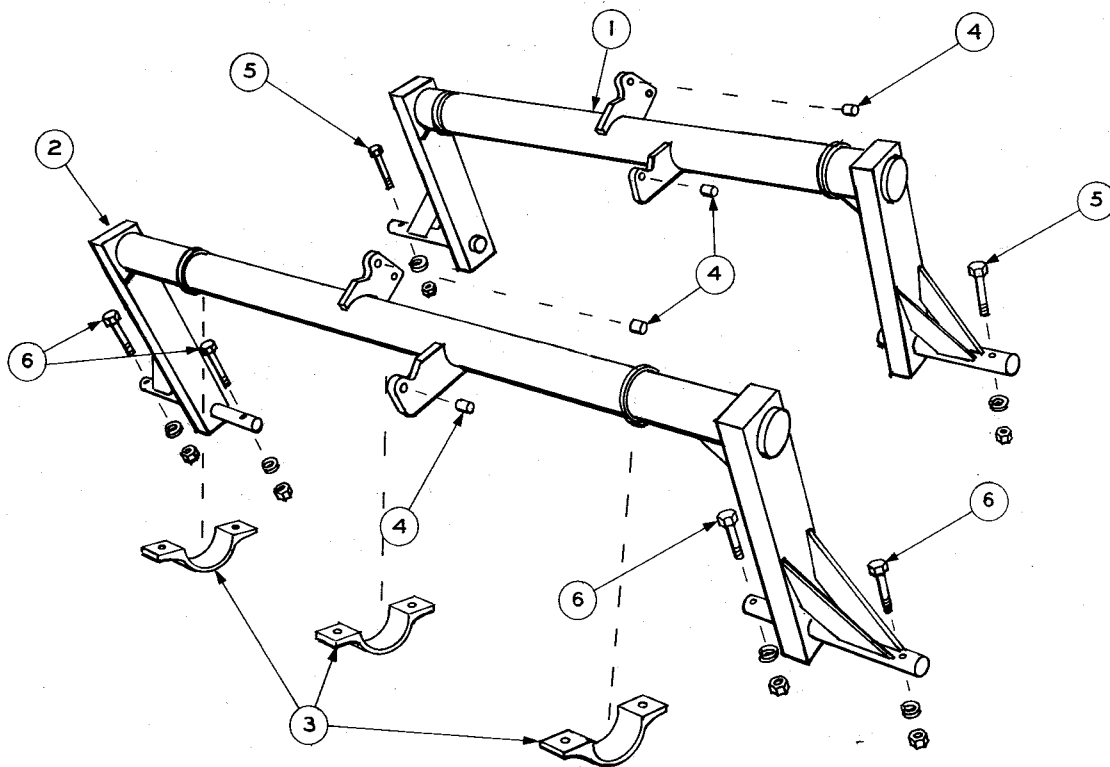
## DRAW BAR ASSEMBLY

ITEM	PART NO.	NO. REQD.	DESCRIPTION
14	10006-019	OPTIONAL	CLEVIS HITCH
15	10006-010	1	BAR HITCH
16	1/8 - 27 NPT ZP	1	ZERK
17	12023-007	1	HITCH PIN
18	12023-008	1	HITCH PIN COLLAR
19	3/8 X 3 1/2 NC ZP	1	BOLT, NUT & LOCK WASHER
20	12006-009	1	TONGUE WELDMENT
21	2TM-15-0	1	JACK
22	10006-012	1	HOSE CARRIER, NUT & LOCK WASHER
23	10014-004	2	1" BUSHING
24	10029-004	1	DIRECTION DECAL



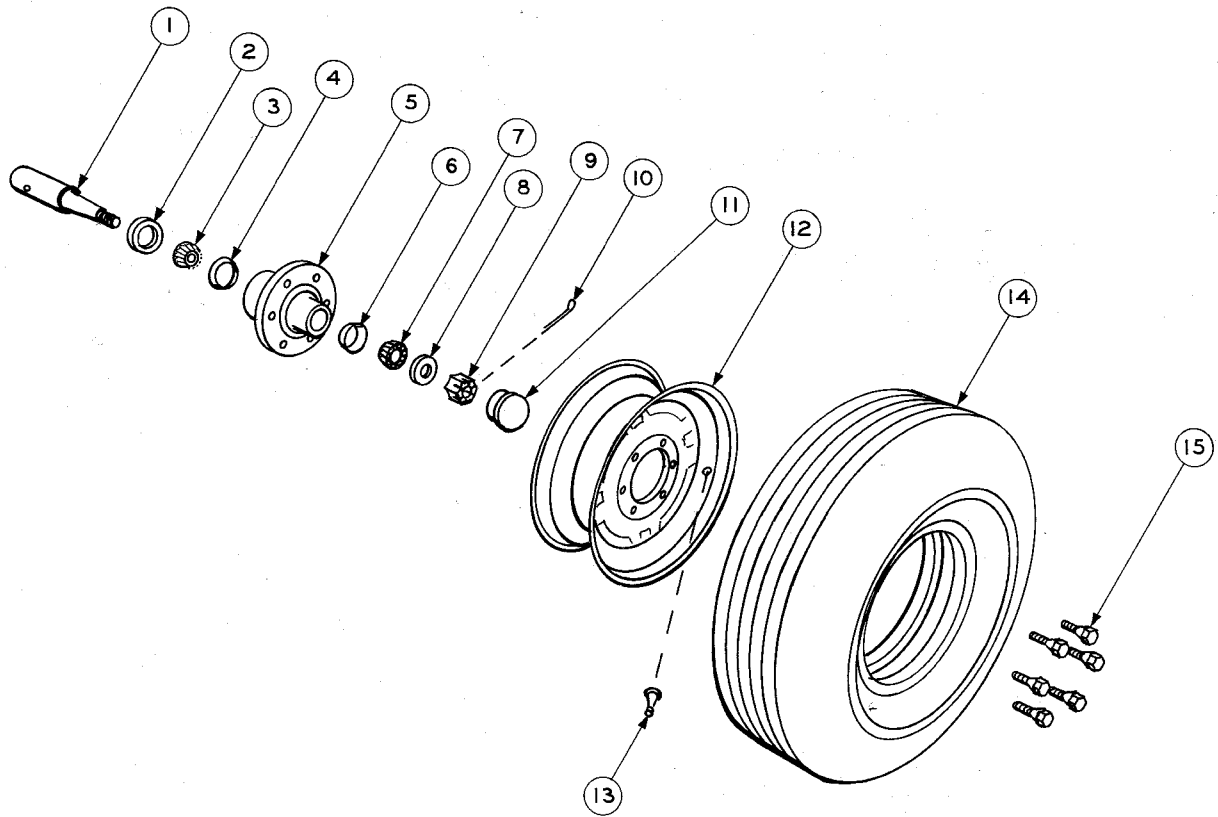
## FRAME ASSEMBLY

ITEM	PART. NO.	NO. REQD.	DESCRIPTION
1	10025-008	1	GANG KNOCKER WRENCH
2	1/2 NC ZP	1	NUT & LOCK WASHER
3	12001-009	1	MAIN FRAME WELDMENT
4	1075-003	3	ROCKER SHAFT BEARING
5	3/4 X 8 NC ZP	6	BOLT, NUT, 2 FLAT WASHER & LOCK WASHER
6	1/2 X 2 NC ZP	1	BOLT NUT & LOCK WASHER
7	10004-004	2	ROAD LOCK PIN
8	P-794 1/4 ZP	2	CLIP PIN
9	12004-009	1	ROAD LOCK (TIE BACK ASSEMBLY)
10	10014-003	1	CYLINDER LUG PLATE
11	10014-004	1	1" BUSHING
12	12006-010	1	DRAW BAR PIN
13	30025-006	1	2" BUSHING
14	12023-008	1	DRAW BAR COLLAR
15	3/8 X 3 1/2 NC ZP	1	BOLT, NUT & LOCK WASHER
16	3/4 X 7 NC ZP	14	BOLT, NUT & LOCK WASHER
17	12001-001	4	OUTER GANG CLAMP PLATE
18	12001-002	2	FRONT CENTER GANG CLAMP PLATE
19	12001-010	1	REAR CENTER GANG CLAMP PLATE
20	1/8-27 NPT ZP	2	ZERK
21	10029-003	2	BIG G DECAL
22	10029-002	1	SERIAL NUMBER PLATE



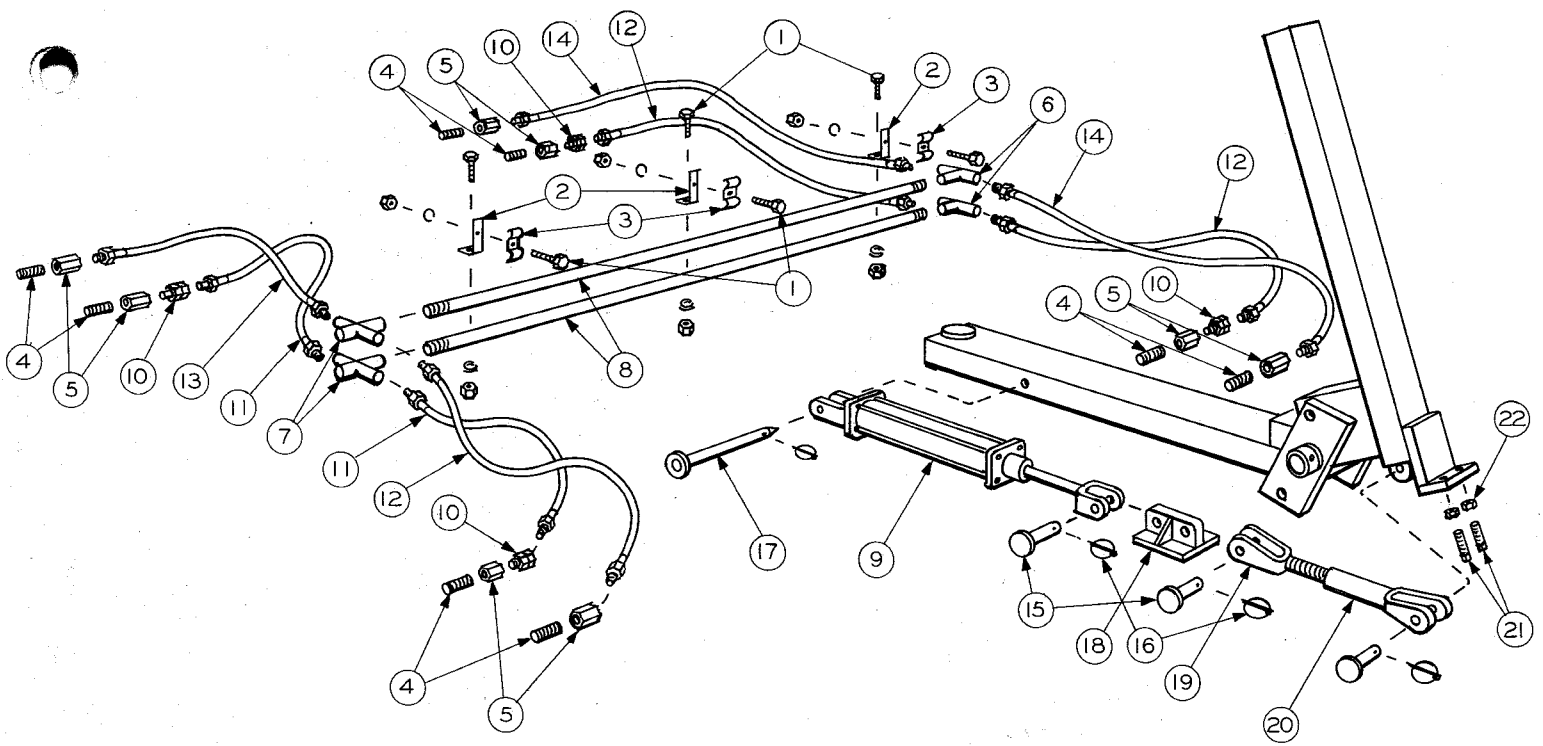
## ROCKER SHAFT ASSEMBLY

ITEM	PART NO.	NO. REQ'D.	DESCRIPTION
1	12010-009	1	ROCKER SHAFT - 12' & 14' MODEL
2	12010-010		ROCKER SHAFT - 16', 18' & 20' MODEL
3	1075-004	3	ROCKER BEARING CAP
4	10014-004	2	1" BUSHING
5	1/2 X 3 1/2 NC ZP	2	BOLT, NUT & LOCK WASHER - 12' & 14' MODEL
6		4	BOLT, NUT & LOCK WASHER - 16', 18' & 20' MODEL



## AXLE ASSEMBLY

ITEM	PART NO.	COMPLETE AXLE ASSY. PART NO. 10018-009 NO. REQUIRED	HUB & SPINDLE ASSY. PART NO. 10018-019 NO. REQUIRED	DESCRIPTION
1	106 169 A	1	1	SPINDLE
2	106 166	1	1	2" SEAL
3	105 771	1	1	INNER CONE BEARING
4	105 770	1	1	INNER CUP
5	106 164	1	1	HUB
6	104 081	1	1	OUTER CUP
7	104 082	1	1	OUTER CONE BEARING
8	104 581	1	1	13/16 FLAT WASHER
9	103 289	1	1	3/4 - 16 CASTELATED NUT
10	3/16 X 1 1/2 ZP	1	1	COTTER PIN
11	103 969	1	1	CAP
12	106 483	1	-	15 X 8L WHEEL
13	TR-415	1	-	VALVE STEM
14	8:55-15 11L - 15	1 OPTIONAL	- -	TUBELESS TIRE FLOTATIONAL TIRE
15	105 144	6	-	9/16 - 18 SAE LUG BOLT



## HYDRAULIC ASSEMBLY

ITEM	PART NO.	NO. REQD.	DESCRIPTION
1	3/8 X 1 1/4 NC ZP	6	BOLT, NUT & LOCK WASHER
2	10025 - 002	3	PIPE CLAMP
3	30025 - 005	3	PIPE BRACKET - SHORT
4	11008 - 001	8	BLACK PIPE 1/2 MALE NPT BOTH ENDS 6" LONG
5	2H128F-8F	8	1/2 FEMALE NPTF TO FEMALE NPTF UNION
6	1/2 FEMALE NPTF	2	BLACK STRAIGHT TEE
7	1/2 FEMALE NPTF	2	BLACK PIPE CROSS
8	11008 - 002	2	BLACK PIPE 1/2 MALE NPT BOTH ENDS 84" LONG
9	PMC 7012 SP	4	2 X 12 HYDRAULIC CYLINDER
10	2H108 - 08	4	1/2 MALE NPTF TO 1/2 FEMALE NPSM RESTRICTOR W/055 ORIFICE
11	11008 - 003	2	HYDRAULIC HOSE 3/8 SAE W 1/2 MALE NPT COUPLINGS 36" LONG
12	30008 - 006	3	HYDRAULIC HOSE 3/8 SAE W 1/2 MALE NPT COUPLINGS 48" LONG
13	30008 - 007	1	HYDRAULIC HOSE 3/8 SAE W 1/2 MALE NPT COUPLINGS 54" LONG
14	30008 - 008	2	HYDRAULIC HOSE 3/8 SAE W 1/2 MALE NPT COUPLINGS 60" LONG
15	1 X 2 5/8 ZP	12	CLEVIS PIN
16	P-794-1/4 ZP	16	CLIP PIN
17	11025 - 013	4	CLEVIS PIN
18	11036 - 004	4	CONNECTING SLIDE
19	30035 - 029	4	TURNBUCKLE - MALE
20	30035 - 030	4	TURNBUCKLE - FEMALE
21	3/4 X 2 NC ZP	8	SQUARE HEAD SET SCREW
22	3/4 NC ZP	8	JAM NUT





# GANG ASSEMBLIES

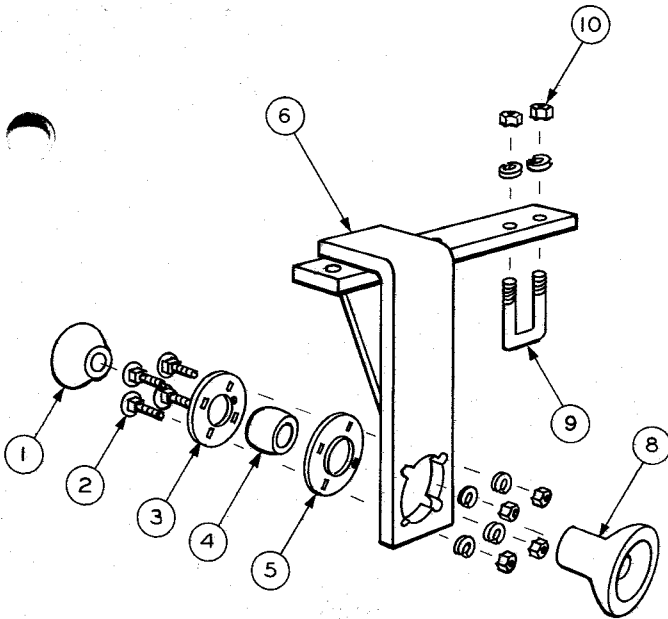
Item	Part No.	Description	Model No. & No. Required					
			1212 499 12' Model	1214 499 14' Model	1216 499 16' Model	1218 499 18' Model	1220 499 20' Model	1218 499 18' Folding Gangs
1	12016-001	Beam 71"	2	-	-	-	-	-
2	12016-002	Beam 80"	-	2	-	-	-	-
3	12016-006	Beam 85"	2	-	-	-	-	-
4	12016-003	Beam 90"	-	-	2	-	-	-
5	12016-007	Beam 95"	-	2	-	-	-	-
6	12016-008	Beam 105"	-	-	2	-	-	-
7	12016-004	Beam 108"	-	-	-	2	-	-
8	12016-005	Beam 117"	-	-	-	-	2	-
9	12016-011	Beam 122"	-	-	-	2	-	-
10	12016-012	Beam 132"	-	-	-	-	2	-
11	12016-013	Inner Folding Beam RH 63"	-	-	-	-	1	1
12	12016-014	Inner Folding Beam RH 66 1/2"	-	-	-	-	1	1
13*	12016-023	Inner Folding Beam LH 63"	-	-	-	-	1	1
14*	12016-024	Inner Folding Beam LH 66 1/2"	-	-	-	-	1	1
15	12016-015	Outer Folding Beam 41 1/2"	-	-	-	-	2	-
16	12016-016	Outer Folding Beam 55 1/2"	-	-	-	-	-	2
17	12016-017	Outer Folding Beam 59"	-	-	-	-	2	-
18	12016-018	Outer Folding Beam 69"	-	-	-	-	-	2
19	12017-012	Scraper Beam 46"	-	-	-	-	2	-
20	12017-013	Scraper Beam 54"	-	-	-	-	6	6
21	12017-014	Scraper Beam 64"	-	-	-	-	-	2
22	12017-001	Scraper Beam 65"	2	-	-	-	-	-
23	12017-006	Scraper Beam 73"	2	-	-	-	-	-
24	12017-002	Scraper Beam 74"	-	2	-	-	-	-
25	12017-003	Scraper Beam 83"	-	2	2	-	-	-
26	12017-008	Scraper Beam 92"	-	-	2	-	-	-
27	12017-004	Scraper Beam 101"	-	-	-	2	-	-
28	12017-011	Scraper Beam 109"	-	-	-	2	-	-
29	12017-005	Scraper Beam 110"	-	-	-	-	2	-
30	30017-007	Scraper Beam 118"	-	-	-	-	2	-
31	30028-001	Shaft 51 7/8" 6 Blades	-	-	-	6	4	6
32	30028-002	Shaft 61" 7 Blades	-	-	-	2	2	2

Item	Part No.	Description	Model No. & No. Required							
			1212 499 12' Model	1214 499 14' Model	1216 499 16' Model	1218 499 18' Model	1220 499 20' Model	1218 499 18' Folding Gangs	1220 499 20' Folding Gangs	
33	30028-003	Shaft 70 1/4" 8 Blades	2	-	-	-	2	-	2	
34	30028-004	Shaft 79 3/8" 9 Blades	2	2	-	-	-	-	-	
35	30028-005	Shaft 88 1/2" 10 Blades	-	2	2	-	-	-	-	
36	10028-013	Shaft 97 3/4" 11 Blades	-	-	2	-	-	-	-	
37	2" x 10 1/4"	Hinge Pin	-	-	-	-	-	-	4	
38	12023-008	Hinge Pin Collar	-	-	-	-	-	-	4	
39	3/8 x 3 1/2 NC ZP	Bolt, Nut & Lock Washer	-	-	-	-	-	-	4	
40*	20-2985	Blade 24" 1/4" Notched	Optional							
41*	20-2984	Blade 24" 1/4" Plain	Optional							
42	20-2843	Blade 24" 6 Ga. Plain	28	32	36	44	48	44	48	
43	20-2873	Blade 22" Plain	2	2	2	2	2	2	2	
44	21-2965	Blade 20" Plain	2	2	2	2	2	2	2	
45	21-2964	Blade 18" Plain	2	2	2	2	2	2	2	
46	12007-049	Bearing Hanger LH	4	6	6	8	8	8	8	
47	12007-050	Bearing Hanger RH	4	6	6	8	8	8	8	
48	12019-001	Scraper LH	11	11	13	15	17	15	17	
49	12019-002	Scraper RH	11	11	13	15	17	15	17	
50	12019-003	Bearing Hanger Scraper LH	4	6	6	8	8	8	8	
51	12019-004	Bearing Hanger Scraper RH	4	6	6	8	8	8	8	
52	1/2 x 3 NC ZP	U-Bolt	30	34	38	46	50	46	50	
53	1/2 NC ZP	Bolt, Nut & Lock Washer	60	68	76	92	100	92	100	
54	1070-001	Full Spool 9"	22	22	26	26	30	26	30	
55	3/8 x 3 1/2 ZP	Cotter Pin	8	8	8	16	16	16	16	
56	10019-007	Lock Nut	8	8	8	16	16	16	16	
57	850-001	End Washer	8	8	8	16	16	16	16	
58	3/4 x 6 1/4 NC ZP	U-Bolt	8	12	12	16	16	16	16	
59	3/4 NC ZP	Nut & Lock Washer	16	24	24	32	32	32	32	
60	11025-012	Keeper Pin	-	-	-	-	-	4	4	
61	P794 1/4 ZP	Clip Pin	-	-	-	-	-	8	8	

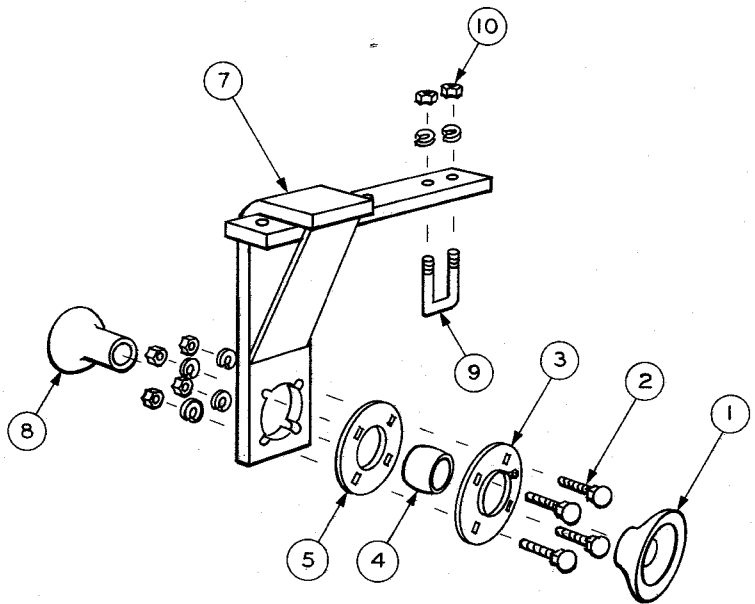
NOTE 1: Folding Beam RH Shown. LH Opposite (Optional on 20' Units)

NOTE 2: Folding Beam RH Shown. LH Opposite (Optional on 18' Units)

\* = Not Shown



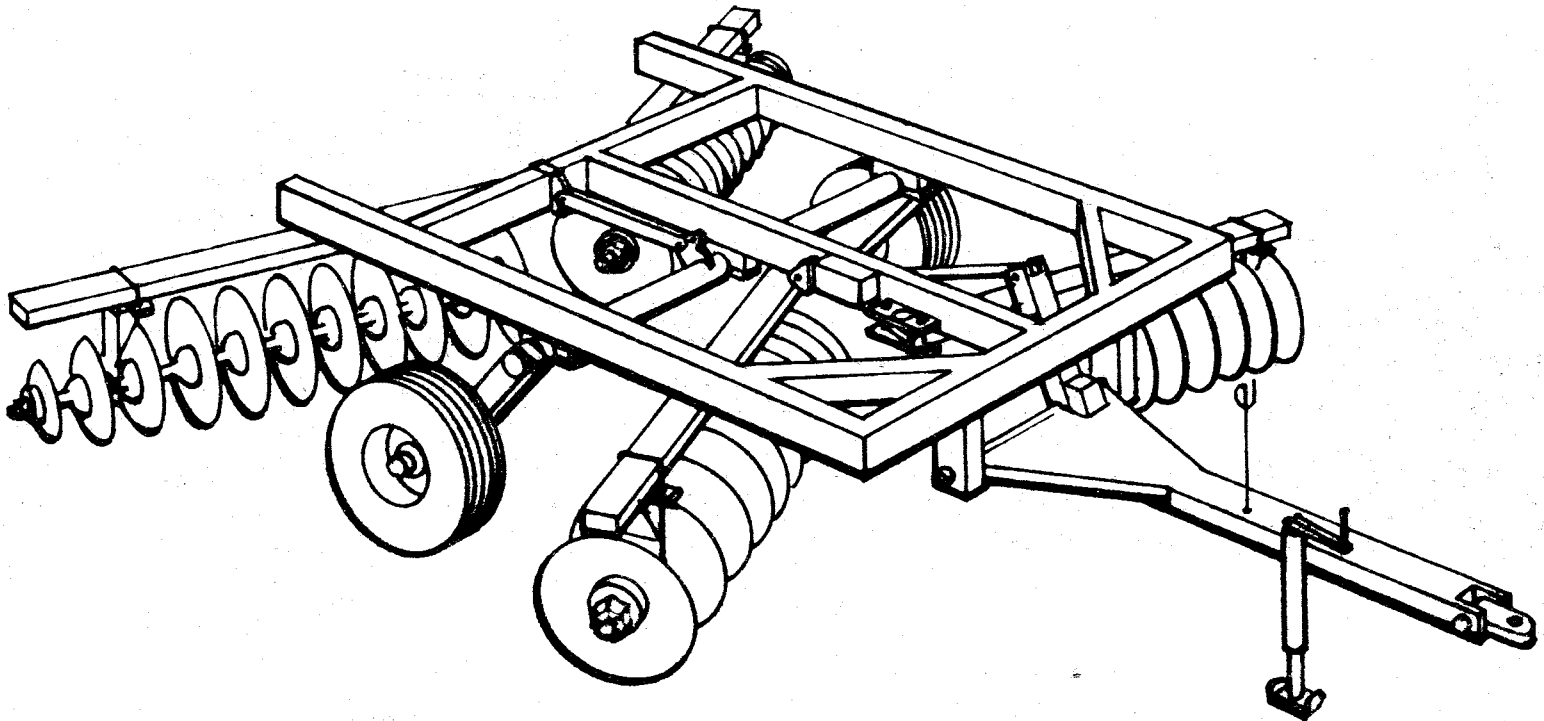
ASSEMBLY 12007-049



ASSEMBLY 12007-050

# BEARING HANGER ASSEMBLIES

Item	Part No.	Description	Part No. & No. Required			
			Left Hand 12007-049	Right Hand 12007-050	Left Hand 12007-029	Right Hand 12007-030
1	1180-002	Half Spool (Concave)	1	1	-	-
2	1/2 x 1 1/2 NC ZP	Carriage Bolt, Nut & Lock Washer	4	4	4	4
3	10007-004	Outer Flangette with Zerk	1	1	1	1
4	10007-003	Bearing	1	1	1	1
5	10007-002	Inner Flangette	1	1	1	1
6	12007-009	Bearing Hanger Weldment LH	1	-	1	-
7	12007-010	Bearing Hanger Weldment RH	-	1	-	1
8	1180-003	Half Spool (Convex)	1	1	-	-
9	3/4 x 3 5/8 x 2 1/16 NC ZP	U-Bolt	1	1	-	-
10	3/4 NC ZP	Nut & Lock Washer	2	2	-	-



## WARRANTY

Green Line, Inc. warrants each product (except tires) manufactured by it shall be free from defects in material and workmanship. This warranty shall be limited to making good, F.O.B. Factory, any part which under normal and proper use and maintenance proves defective in material and workmanship within one year (12 months) after date of delivery to original Buyer, provided that notice of such defect and satisfactory proof is promptly given by the Buyer to the Seller and such part is returned with transportation charges prepaid and Factory examination proves such part to have been defective. It is understood that Buyer shall bear the expense of installation and will pay for travel time if he chooses to have product repaired at another location. This warranty does not apply to any product that has been subject to overloading, misuse, negligence or accident, nor to any part that shall have been repaired, altered, or using parts not sold or approved by Green Line, Inc. This warranty is the only warranty applicable and is expressly in lieu of any warranties otherwise implied, and in no event shall the Seller or the Manufacturer be liable for consequential or special damages and neither assumes nor authorizes anyone to assume for any of them any additional liability in connection therewith.



***green line, inc.***

AIRPORT INDUSTRIAL PARK  
P. O. BOX 434  
HARPER, KANSAS 67058  
PHONE (316) 896-7372

In the interest of technical development, we reserve the right to make changes without notice at anytime in design, equipment, specifications, materials and prices, without obligation to incorporate such improvements in any products which have been shipped or are in service.